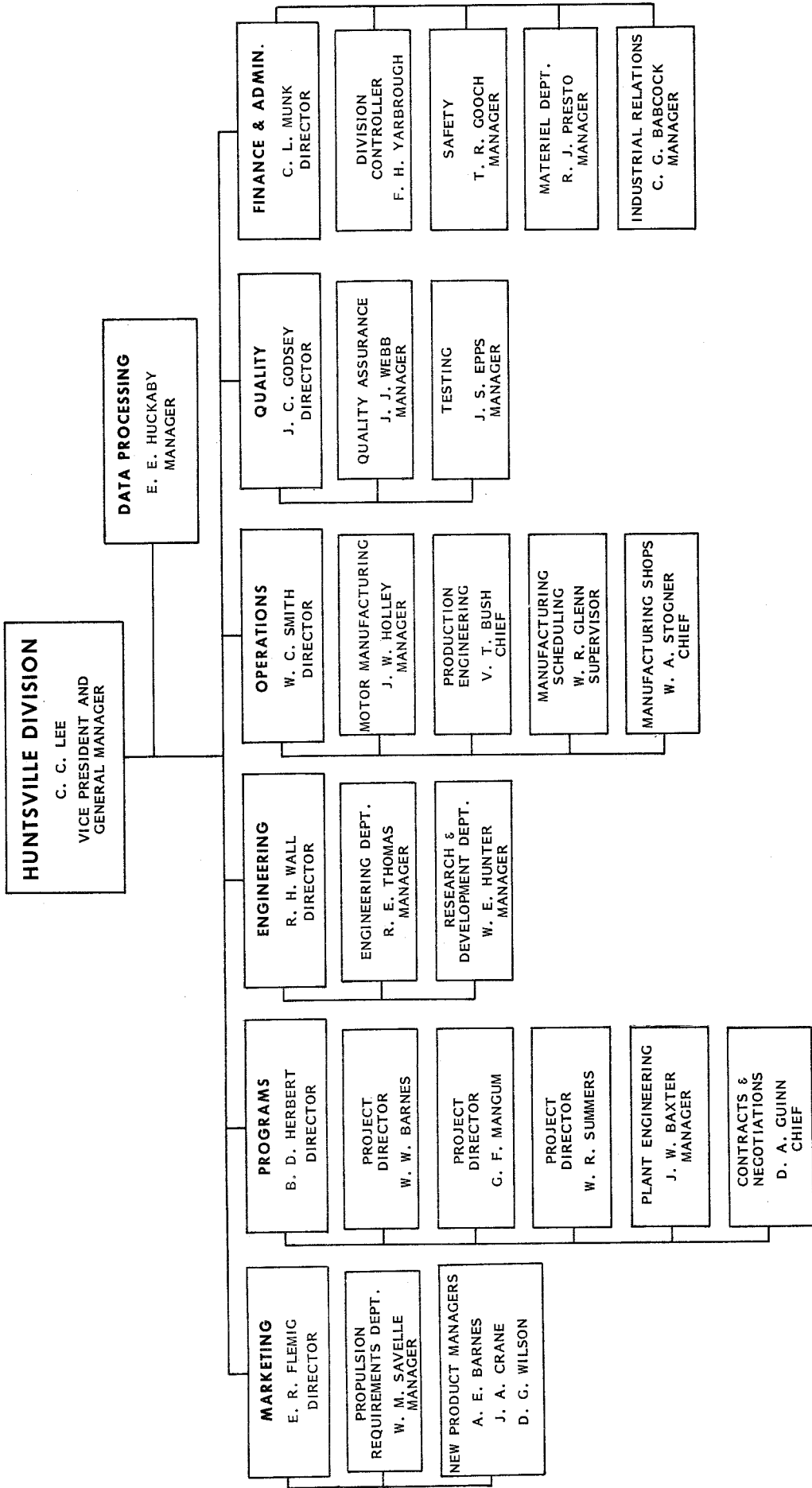


APR 1984

1 Apr 84



MORTON THIOKOL, INC./HUNTSVILLE DIVISION

| | | <u>BLDG</u> | <u>TELEPHONE</u> |
|-----|--|-------------|------------------|
| 100 | VICE PRESIDENT AND GENERAL MANAGER | | |
| | 101 VICE PRESIDENT AND GENERAL MANAGER'S OFFICE | 7650 | 882-8182 |
| 850 | DATA PROCESSING DEPARTMENT | | |
| | 851 DEPARTMENT OFFICE | 7612 | 882-8210 |
| | 852 PROGRAMMING/BUSINESS PROGRAMMING/SCIENTIFIC | 7612 | 882-8213 |
| | 853 MACHINE OPERATIONS/TECH SUPPORT | 7612 | 882-8106 |
| | MACHINE OPERATIONS/COMPUTER OPERATOR | 7612 | 882-8217 |
| | 854 EAM SERVICES | 7612 | 882-8216 |
| | | | 882-8306 |
| 200 | MARKETING | | |
| | 201 DIRECTOR'S OFFICE | 7650 | 882-8418 |
| | 202 NEW BUSINESS MANAGERS | 7612 | 882-8426 |
| | 211 PROPULSION REQUIREMENTS DEPARTMENT | | |
| | DEPARTMENT OFFICE | 7611 | 882-8452 |
| | 212 PROPOSAL MANAGEMENT | 7611 | 882-8446 |
| | 213 COST PROPOSALS | 7611 | 882-8455 |
| | 214 PUBLICATIONS | 7628 | 882-8646 |
| 300 | FINANCE AND ADMINISTRATION | | |
| | 301 DIRECTOR'S OFFICE | 7650 | 882-8362 |
| | COMMUNICATIONS AND PUBLIC RELATIONS | 7650 | 882-8178 |
| | MAIL ROOM | 7650 | 882-8351 |
| | 320 DIVISION CONTROLLER | | |
| | 321 DEPARTMENT OFFICE | 7612 | 882-8525 |
| | 330 MATERIEL DEPARTMENT | | |
| | 331 DEPARTMENT OFFICE | 7612 | 882-8128 |
| | 332 STORES AND DISTRIBUTION | 7612 | 882-8121 |
| | 333 PURCHASING | 7612 | 882-8129 |
| | 334 PROPERTY AND INVENTORY | 7612 | 882-8135 |
| | 340 INDUSTRIAL RELATIONS | | |
| | 341 DEPARTMENT OFFICE | 7631 | 882-8143 |
| | EMPLOYMENT OFFICE | 7631 | 882-8144 |
| | INSURANCE OFFICE | 7631 | 882-8245 |
| | SECURITY OFFICE | 7650 | 882-8350 |
| | 360 SAFETY DEPARTMENT | | |
| | 361 DEPARTMENT OFFICE | 7650 | 882-8438 |
| | FIRST AID | 7667 | 882-8219 |

| | | | |
|-----|--|------|----------|
| 400 | ENGINEERING | | |
| | 401 DIRECTOR'S OFFICE | 7650 | 882-8434 |
| | 430 ENGINEERING | | |
| | 431 DEPARTMENT OFFICE | 7611 | 882-8230 |
| | 432 ROCKET ENGINEERING | 7611 | 882-8234 |
| | LIBRARY | 7611 | 882-8255 |
| | 434 ADVANCED DESIGN | 7611 | 882-8240 |
| | 435 PROPELLANT TESTING, STRUCTURES AND COMBUSTION | 7611 | 882-8237 |
| | 470 RESEARCH AND DEVELOPMENT | | |
| | 471 DEPARTMENT OFFICE | 7631 | 882-8364 |
| | 472 RESEARCH | 7632 | 882-8412 |
| | 473 DEVELOPMENT | 7631 | 882-8374 |
| 500 | PROGRAMS | | |
| | 501 DIRECTOR'S OFFICE | 7650 | 882-8436 |
| | 515 CONTRACTS AND NEGOTIATIONS | 7611 | 882-8444 |
| | 521 PROJECT DIRECTOR - W. P. SUMMERS | 7611 | 882-8279 |
| | 541 PROJECT DIRECTOR - G. F. MANGUM | 7611 | 882-8276 |
| | 550 PLANT ENGINEERING | | |
| | 551 DEPARTMENT OFFICE | 7631 | 882-8190 |
| | 552 FACILITIES ENGINEERING | 7605 | 882-8371 |
| | 553 MAINTENANCE | 7616 | 882-8192 |
| | 554 FACILITY MODIFICATIONS | 7616 | 882-8293 |
| | | | 882-8492 |
| | 591 PROJECT DIRECTOR - W. W. BARNES | 7612 | 882-8275 |
| 600 | OPERATIONS | | |
| | 601 DIRECTOR'S OFFICE | 7728 | 882-8109 |
| | 611 MOTOR MANUFACTURE | | |
| | 611 DEPARTMENT OFFICE | 7728 | 882-8176 |
| | 612 PROPELLANT MANUFACTURING | 7666 | 882-8150 |
| | 613 TACTICAL MOTOR LOADING | 7728 | 882-8369 |
| | 614 LARGE MOTOR LOADING | 7666 | 882-8151 |
| | 621 MANUFACTURING SHOPS | | |
| | 621 SHOP OFFICE | 7601 | 882-8146 |
| | 631 MANUFACTURING SCHEDULE | | |
| | 631 SCHEDULING OFFICE | 7728 | 882-8174 |
| | 641 PRODUCTION ENGINEERING | | |
| | 641 PRODUCTION ENGINEERING OFFICE | 7728 | 882-8209 |
| 700 | QUALITY | | |
| | 701 DIRECTOR'S OFFICE | 7650 | 882-8107 |
| | 710 QUALITY ASSURANCE DEPARTMENT | | |
| | 711 DEPARTMENT OFFICE | 7641 | 882-8374 |
| | 712 INSPECTION SECTION | 7641 | 882-8314 |
| | 713 QUALITY ENGINEERING AND RELIABILITY SECTION | 7641 | 882-8320 |
| | 714 CONTROL LAB | 7667 | 882-8343 |
| | 720 TESTING DEPARTMENT | | |
| | 721 DEPARTMENT OFFICE | 7641 | 882-8319 |
| | 722 TEST AND ANALYSIS SECTION | 7641 | 882-8297 |

723 NON-DESTRUCTIVE TESTING SECTION
724 METROLOGY LABORATORY

7641
7641

882-8328
882-8326

“it’s up to you”



When you are speaking with
someone on the telephone,
YOU are the company you
work for. The impression
you create is the impression
the caller will get of
Morton Thiokol/Huntsville
Division.



MORTON THIOKOL, INC

CORPORATE OFFICE

MORTON THIOKOL, INC.
110 North Wacker Drive
Chicago, Illinois 60606
TELEPHONE (312) 612-5200
FAX 312 621-5272

AEROSPACE GROUP

HEADQUARTERS

MORTON THIOKOL, INC.
110 North Wacker Drive
Chicago, Illinois 60606
TELEPHONE (312) 612-5200
RAPIFAX 312 621-5272

WASHINGTON OFFICE

1735 Jefferson Davis Highway
Suite 403
Arlington, Virginia 22202
TELEPHONE (703) 892-6300
RAPIFAX 215 968-1402

HUNTSVILLE OFFICE

2707 Artie Street, Suite 7
Huntsville, ALabama 35805
TELEPHONE (205) 534-2485
RAPIFAX 421-8482

WESTERN REGIONAL OFFICE

4640 Admiralty Way, Suite 429
Marina del Rey, California 90291
TELEPHONE (213) 823-6314
RAPIFAX 714 730-4228

LANCASTER DISTRICT OFFICE

Essex House, Suite 318
44916 10th Street, West
or P. O. Box 1690
Lancaster, California 93534
TELEPHONE (805) 942-8423
RAPIFAX 714 730-4227

AEROSPACE DIVISIONS

ELKTON DIVISION

P. O. Box 241
Elkton, Maryland 21921
TELEPHONE (301) 398-3000
TWX 710 238-1680
RAPIFAX 301 398-3000 X205
PANAFAX 301 398-3000 X207

| | |
|--------------------------|--|
| HUNTSVILLE DIVISION | Huntsville, Alabama 35807-7501 TELEPHONE (205) 882-8000 TWX 810 726-2140 RAPIFAX 205 882-0018 |
| LONGHORN DIVISION | Marshall, TX 75670 TELEPHONE (214) 679-3181 TWX 910 860-5702 DEX 214 679-2324 |
| LOUISIANA DIVISION | P. O. Box 30058 Shreveport, LA 71130 TELEPHONE (318) 459-5501 XEROX 318 459-5187 |
| WASATCH DIVISION | P. O. Box 524 Brigham City, UT 84302 TELEPHONE (801) 863-3511 TWX 910 971-5190 RAPIFAX 810 863-3536 XEROX 801 863-2126 |
| UTAH DIVISION | 3350 Airport Road OGDEN, UT 84403 TELEPHONE (801) 626-1000 TWX 910 971-5922 RAPIFAX 801 626-1269 XEROX 801 626-1210 |
| SPECIALTY CHEMICALS | MORTON THIOKOL, INC. 110 North Wacker Drive Chicago, Illinois 60606 TELEPHONE (312) 612-5200 FAX 312 621-5272 |
| MORTON CHEMICAL DIVISION | 2 North Riverside Plaza Chicago, Illinois 60606 TELEPHONE (312) 621-5200 |
| VENTRON DIVISION | 150 Andover St. Danvers, Massachusetts 01923 TELEPHONE (617) 774-3100 TWX 710 347-6480 RAPIFAX 617 774-3100 X245 QUIP 617 774-3100 X122 |

SOUTHWEST CHEMICAL
SERVICES, INCORPORATED

2575 Two Shell Plaza
Houston, TX 77002
TELEPHONE (713) 228-9136
RAPIFAX 713 228-8140
QUIP 713 228-1658

CARSTAB CORPORATION

West Street
Reading, OH 45215
TELEPHONE (513) 733-2100
RAPIFAX 513 733-2133

DYNACHEM CORPORATION

P. O. Box 12047
Santa Ana, California 92711
TELEPHONE (714) 832-3560
TELEX 692461
FAX 714 731-1363

SALT

MORTON SALT DIVISION

110 North Wacker Drive
Chicago, Illinois 60606
TELEPHONE (312) 612-5200

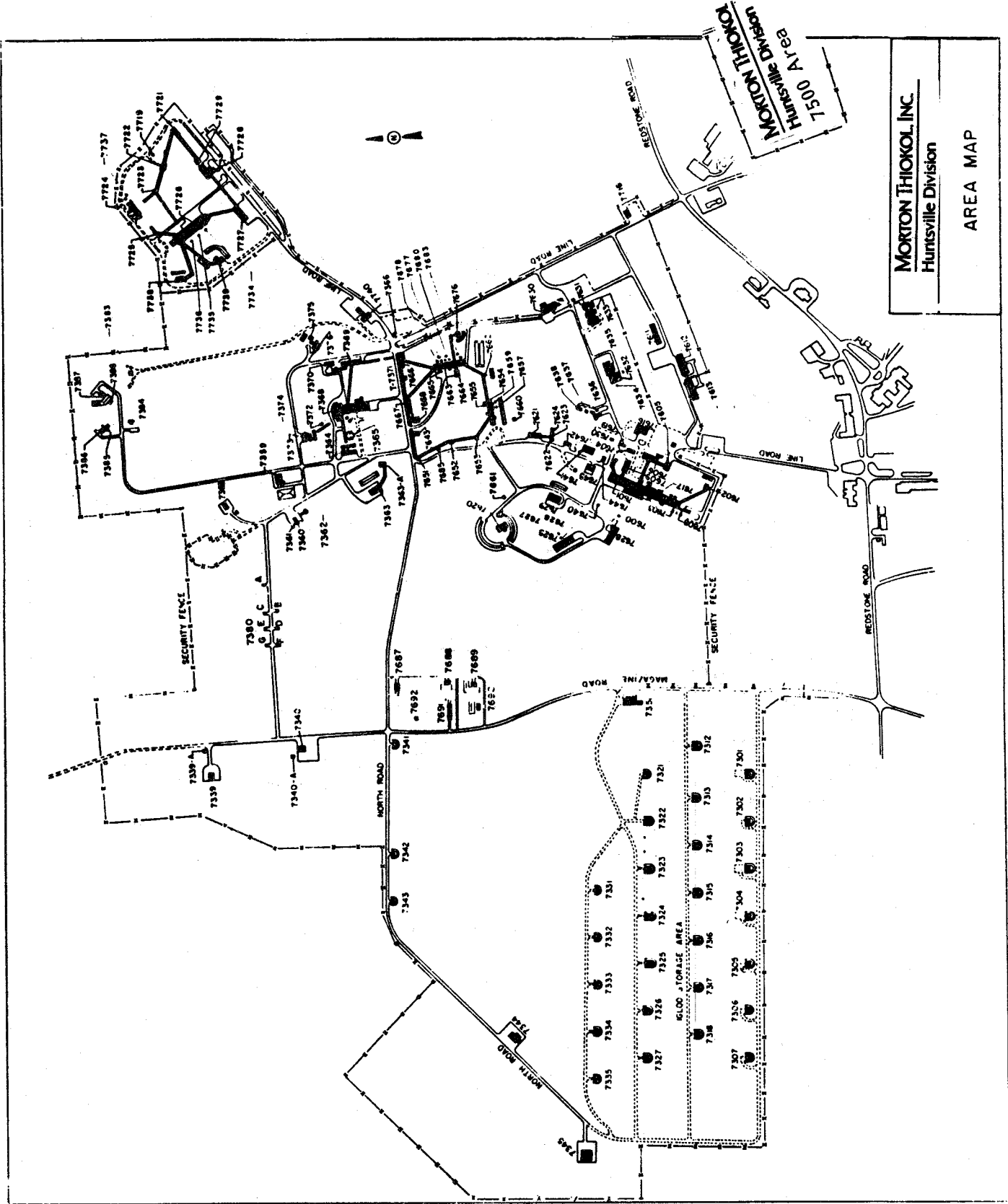
THE CANADIAN SALT
COMPANY LIMITED

4 Robert Speck Parkway
8th Floor
Mississauga, Ontario,
Canada L4Z-1S1
TELEPHONE (416) 848-4800

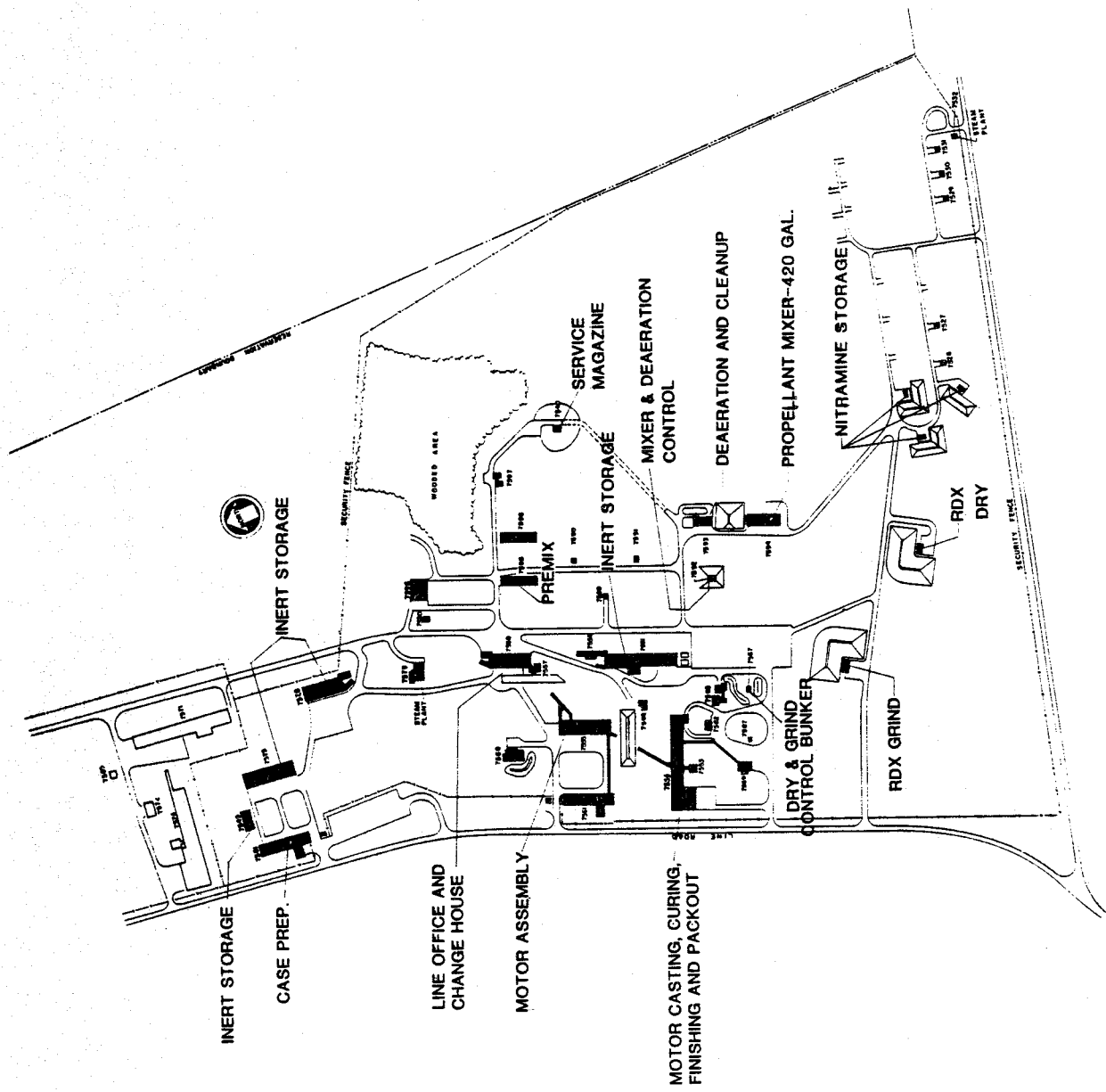
HOUSEHOLD PRODUCTS

TEXIZE DIVISION

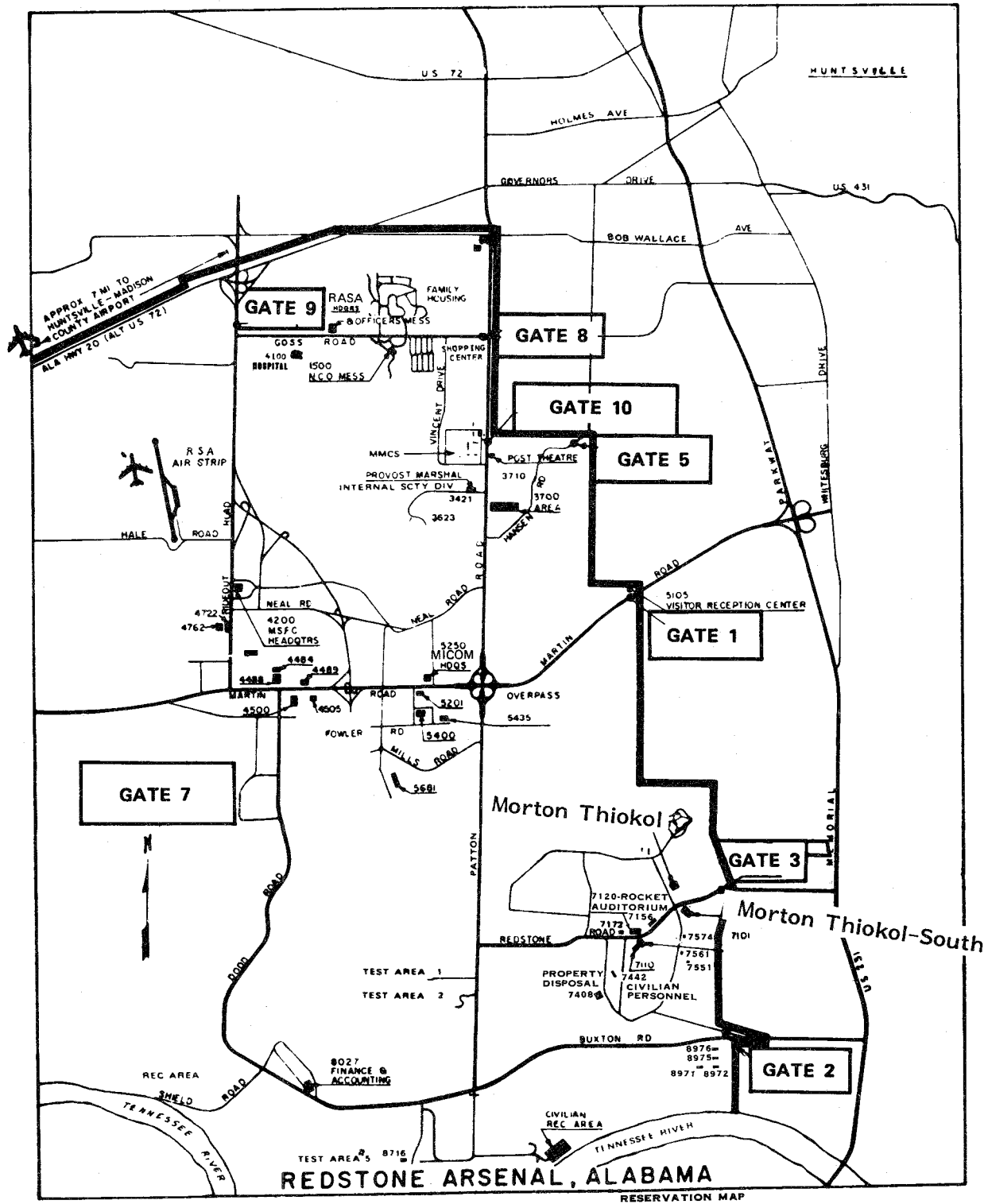
P. O. Box 368
Greenville, SC 29602
TELEPHONE (803) 963-4261



MORTON THIOKOL, INC.
 Huntsville Division
 AREA MAP



SOUTH MORTON THIOKOL
7500 Area



| | <u>BUILDING</u> | <u>PHONE NO.</u> |
|------------------------------------|-----------------|------------------|
| EMERGENCY-INPLANT | 7716 | 110 |
| INFORMATION | 7650 | 882-8000 |
| TELEPHONE REPAIR SERVICE | 7650 | OPERATOR |
| ACCOUNTS PAYABLE | 7612 | 882-8356 |
| ASSEMBLY (LARGE MOTORS) | 7344 | 882-8165 |
| ASSEMBLY (SMALL MOTORS & IGNITERS) | 7654 | 882-8164 |
| BOILER HOUSE | 7668 | 882-8198 |
| CASE PREPARATION (LARGE MOTORS) | 7740 | 882-8160 |
| CASE PREPARATION (SMALL MOTORS) | 7368 | 882-8157 |
| CASTING | 7340 | 882-8169 |
| CASTING | 7360 | 882-8170 |
| CASTING (BAYS A, B, & U) | 7368 | 882-8154 |
| CASTING CAN CLEANING | 7359 | 882-8166 |
| CHANGE HOUSE - LINE 1 | 7666 | 882-8153 |
| CHANGE HOUSE - LINE 5 | 7606 | 882-8163 |
| CHANGE HOUSE - MAVERICK | 7728 | 882-8113 |
| CHANGE HOUSE - PATRIOT | 7628 | 882-8329 |
| COMMUNICATIONS - MAIL - LOCKS | 7650 | 882-8351/178 |
| CONTROL LABORATORY - DOWNSTAIRS | 7667 | 882-8346 |
| CONTROL LABORATORY - UPSTAIRS | 7667 | 882-8343 |
| COMPUTATIONS VISITOR AREA | 7612 | 882-8214 |
| DCAA RESIDENT AUDITORS | 7612 | 882-8141 |
| DCAS PROPERTY ADMINISTRATOR | 7631 | 876-1486 |
| DCASMA RESIDENT INSPECTORS | 7641 | 882-8347/348 |

| | | |
|--|------|----------------------|
| DEGREASER | 7663 | 882-8159 |
| DUCTED ROCKET | 7376 | 882-8337 |
| EMPLOYMENT | 7631 | 882-8144 |
| FIRST AID | 7667 | 882-8219 |
| FIRST AID | 7667 | 882-8220 |
| FLUID ENERGY MILL | 7689 | 882-8467 |
| GENERAL DYNAMICS RESIDENT REPRESENTATIVE | 7612 | 882-8287 |
| GUARD CAPTAIN | 7716 | 882-8354 |
| GUARD GATE NO. 1 | | 882-8469 |
| GUARD GATE NO. 4 | | 882-8355 |
| GUARD GATE NO. 5 | | 882-8443 |
| HYDROTEST | 7645 | 882-8336 |
| IGNITER LAB | 7621 | 882-8260 |
| INSTRUMENT TECHNICIANS | 7606 | 882-8196 |
| INSURANCE | 7631 | 882-8145 |
| JANITOR FOREMAN | 7606 | 882-8196 |
| LIBRARY | 7611 | 882-8255 |
| LINE OFFICE (FINISHING & ASSEMBLY) | 7666 | 882-8151 |
| LINE OFFICE (MOTOR LOADING) | 7666 | 882-8150 |
| LINE OFFICE (MOTOR LOADING) | 7666 | 882-8152 |
| LOADING DOCK | 7351 | 882-8162 |
| MACHINE SHOP | 7601 | 882-8146 |
| MACHINE SHOP | 7601 | 882-8148 |
| MARTIN MARIETTA RESIDENT REPRESENTATIVE | 7611 | 882-8298/ 407/417 |
| MARTIN MARIETTA QUALITY RESIDENT REPR. | 7641 | 881-8477 |

| | | |
|---|------|----------|
| METAL PARTS INSPECTION | 7601 | 882-8340 |
| METALLURGY LAB | 7616 | 882-8267 |
| MIXING (5 GALLON VERTICAL) | 7654 | 882-8159 |
| MIXING (20-GALLON & 50-GALLON) | 7382 | 882-8171 |
| MIXING (200-GALLON) AL PASTE MFG. BAY D-2 | 7368 | 882-8155 |
| MIXING (300-GALLON) | 7363 | 882-8168 |
| MIXING (420-GALLON) | 7339 | 882-8167 |
| MIXING (420-GALLON) | 7382 | 882-8172 |
| MOTOR ASSEMBLY | 7344 | 882-8165 |
| OXIDIZER PROCESSING | 7691 | 882-8468 |
| PATRIOT PRODUCTION LINE | 7625 | 882-8479 |
| PAYROLL | 7612 | 882-8204 |
| PERSONNEL RECORDS | 7631 | 882-8142 |
| PHOTOLAB | 7628 | 882-8465 |
| PLASTIC SHOP | 7601 | 882-8147 |
| PROCESS INSPECTORS | 7667 | 882-8344 |
| PRODUCT INSPECTORS | 7667 | 882-8344 |
| PROPERTY RECORDS | 7612 | 882-8135 |
| PUBLIC RELATIONS | 7650 | 882-8178 |
| PURCHASING EXPEDITING | 7612 | 882-8133 |
| RAPIFAX/TELECOPIER | 7650 | 882-0018 |
| RAW MATERIAL CONTROL | 7631 | 882-8376 |
| RAW MATERIAL WEIGH-UP, BAY M | 7368 | 882-8157 |
| RECEIVING / SHIPPING SUPERVISOR | 7405 | 882-8121 |
| REPRODUCTION | 7628 | 882-8464 |
| RESEARCH LUNCH ROOM | 7632 | 882-8396 |

| | | |
|----------------------------------|------|--------------|
| RESEARCH LINER LAB | 7632 | 882-8386 |
| RESEARCH SECTION FREEZE DRYER | 7632 | 882-0424 |
| SCANNING ELECTRON MICROSCOPE LAB | 7632 | 882-8398 |
| SCHEDULING - MOTOR | 7631 | 882-8174 |
| SECURITY | 7650 | 882-8349/350 |
| SEL 810B ROOM | 7661 | 882-8338 |
| SMOKER (LINE 1) | 7666 | 882-8153 |
| SMOKER (LINE 5) | 7606 | 882-8163 |
| SMOKER (PATRIOT) | 7628 | 882-8113 |
| SPARES/L BAY | 7368 | 882-8156 |
| STORES FOREMAN | 7405 | 882-8475 |
| SUPPLY (OFFICE SUPPLIES) | 7420 | 882-8126 |
| SUPPLY ROOM (MOTOR PARTS) | 7416 | 882-8125 |
| SUPPLY - SHIPPING SUPERVISOR | 7405 | 882-8121 |
| "T" BURNER LAB | 7632 | 882-8266 |
| TEFLON | 7370 | 882-8161 |
| TEST PIT | 7620 | 882-8312 |
| TEST PIT - DUCTED ROCKET | 7376 | 882-8337 |
| TRAVEL - ADVANCES - TICKETS | 7612 | 882-8360 |
| TOOL CONTROL - MANUFACTURING | 7368 | 882-8158 |
| TOOL ROOM SUPPLIES | 7642 | 882-8127 |
| VISITOR CONTROL | 7716 | 882-8354 |
| WELD SHOP | 7609 | 882-8199 |
| X-RAY | 7345 | 882-8339 |

APR 1984

| TC# | NAME | SEC.# | OFFICE PHONE | HOME PHONE |
|--|----------------------|-------|-----------------|---------------------|
| AA | | | | |
| 1961 | ACUFF, HELEN L. | 341 | 882-8143 | 534-4255 |
| 5828 | ADKINS, HUBERT C. | 554 | 882-8492 | SCOTTSB'RO 259-1957 |
| 4851 | ALEXANDER, STEVEN B. | 521 | 882-8281 | 881-5982 |
| 5644 | ALFIERO, RICHARD G. | 432 | 882-8226 | HAZEL GRN 828-5206 |
| 1320 | ALLEN, JOHN H. | 432 | 882-8233 | ATHENS 232-5476 |
| 5527 | ALLISON, WILLIAM H. | 553 | 882-8245 | 859-2179 |
| 5493 | ANDERSON, CARL L. | 473 | 882-8379 | 852-5606 |
| 5867 | ANDERSON, CHARLES L. | 354 | 882-8516 | 536-4900 |
| 5452 | ANDERSON, EDWARD L. | 334 | 882-8137 | 852-8884 |
| 3876 | ANDERSON, HANCEL V. | 712 | 882-8340 | ARAB 586-5987 |
| 5560 | ANDERSON, PEGGY D. | 612 | 882-8150 | UNION GRV Unlisted |
| 0473 | ANDERSON, ROY S. | 724 | 882-8313 | 534-5292 |
| 0705 | ARCHARD, ROBERT E. | 541 | 882-8422 | 534-8553 |
| 2619 | ASKINS, ROBERT E. | 472 | 882-8398 | 881-8361 |
| 3064 | ATCHLEY, REXFORD D. | 432 | 882-8232 | 881-5379 |
| 5508 | ATKINSON, JIMMY D. | 553 | 882-8481 | 881-8416 |
| 2672 | AYCOCK, DAVID P. | 723 | 882-8339 | 881-9051 |
| 0130 | AYCOCK, WILLIAM C. | 434 | 882-8200 | 534-7839 |
| BB | | | | |
| 1412 | BABCOCK, CHARLES G. | 341 | 882-8143 | 883-4500 |
| 2808 | BAILEY, DWIGHT L. | 712 | 882-8344 | ARAB 586-4517 |
| 4883 | BAILEY, RONALD T. | 334 | 882-8136 | FAYETTEV'L 433-3658 |
| 5587 | BAKER, JAMES H. | 553 | 882-8196 | 859-4364 |
| 5447 | BAKER, LESTER C. | 472 | 882-8413 | 859-2839 |

| TC# | NAME | SEC.# | OFFICE PHONE | HOME PHONE |
|------|----------------------|-------|-----------------|----------------------|
| 4903 | BAKER, WALTER J. | 554 | 882-8516 | 859-3274 |
| 5832 | BALLENTINE, RITA Y. | 613 | 882-8369 | LACEY'S SPG778-7317 |
| 5765 | BARBEE, C. | 553 | 882-8196 | DECATUR 350-0295 |
| 0726 | BARCLIFT, JAMES R. | 612 | 882-8150 | MORGAN CTY 498-2427 |
| 5609 | BARKER, LARRY S. | 554 | 882-8188 | 536-6535 |
| 0090 | BARNES, A. EUGENE | 202 | 882-8426 | 881-0808 |
| 5791 | BARNES, MARIAN M. | 613 | 882-8513 | 859-6992 |
| 1459 | BARNES, WILLIAM W. | 591 | 882-8275 | 881-4537 |
| 5364 | BATTLE, ERNEST C. | 613 | 882-8479 | 536-6159 |
| 1906 | BAXTER, JAMES W. | 551 | 882-8371 | 536-8179 |
| 0539 | BEAL, BILLY C. | 554 | 882-8186 | 881-4353 |
| 5822 | BEALEY, LAWAYNE ROE | 554 | 882-8291 | ARAB 586-3679 |
| 5290 | BECK, GENTRY L. | 432 | 882-8260 | 883-0279 |
| 1656 | BELL, MORRACE H. | 621 | 882-8147 | 881-1470 |
| 4129 | BENSINGER, JOHN R. | 321 | 882-8359 | 852-3055 |
| 5664 | BERRY, RICKEY B. | 554 | 882-8188 | ARAB 586-8677 |
| 2142 | BERRYHILL, HOWARD W. | 473 | 882-8408 | FAYETTEV'L 433-2387 |
| 1317 | BEVEL, KENNETH E. | 472 | 882-8387 | GRANT 728-4660 |
| 5730 | BICE, DAVID K. | 613 | 882-8513 | LACEY'S SPG 881-6542 |
| 5880 | BIRCHFIELD | 612 | 882-8150 | NEW HOPE 723-4732 |
| 5850 | BISHOP, SARAH H. | 713 | 882-8323 | 539-0098 |
| 5857 | BISHOP, SUSAN H. | 333 | 882-8308 | JOPPA 586-4905 |
| 5561 | BLACK, JOSEPH G. | 553 | 882-8481 | 883-9475 |
| 5309 | BLACKMON, JEUNE W. | 333 | 882-8104 | 881-3435 |
| 1972 | BLACKWELL, PERRY O. | 641 | 882-8205 | 881-2797 |

| TC# | NAME | SEC.# | OFFICE PHONE | HOME PHONE |
|------|------------------------|-------|-----------------|----------------------|
| 4473 | BLANKS, J.W. | 472 | 882-8384 | 882-0802 |
| 5739 | BLEVINS, THOMAS W. | 554 | 882-8492 | SCOTTSB'O 259-1360 |
| 5354 | BLEVINS, VAUGHN | 432 | 882-8221 | CULLMAN 796-6217 |
| 5603 | BOEGER, KATHLEEN A. | 853 | 882-8335 | 859-6132 |
| 5837 | BOEHME, RICHARD J. | 434 | 882-8441 | 852-4402 |
| 5776 | BOGGS, JAN C. | 613 | 882-8513 | 534-7632 |
| 2559 | BOLNER, THOMAS E. | 434 | 882-8242 | FAYETTEV'L 433-2069 |
| 0586 | BOONE, LEAMON D. | 722 | 882-8312 | 539-4706 |
| 4801 | BOOTH, DAVID W. | 472 | 882-8394 | SCOTTSBORO 259-5130 |
| 5868 | BORDEN, ROBERT L. | 354 | 882-8293 | DECATUR 350-2313 |
| 5559 | BOWLING, LONNIE | 332 | 882-8122 | MORGAN CTY 498-3346 |
| 4543 | BOWLING, LIN | 553 | 882-8196 | MORGAN CTY 498-2608 |
| 5061 | BOYD, DAVID (NMN) | 614 | 882-8164 | NEW HOPE 723-4645 |
| 4478 | BOYD, NITA (J.C.) | 431 | 882-8230 | 852-9195 |
| 4777 | BRADFORD, EDISON, JR. | 553 | 882-8513 | GURLEY 776-3913 |
| 5853 | BRADFORD, LAURA M. | 332 | 882-8121 | TONEY 828-5787 |
| 5670 | BRADFORD, MICHAEL L. | 553 | 882-8516 | 534-7441 |
| 5784 | BRADFORD, RICKY A. | 553 | 882-8513 | TONEY 828-5787 |
| 0158 | BRANDFORD, PERCY | 553 | 882-8196 | 881-6647 |
| 4873 | BRAZELTON, ALBANO R. | 613 | 882-8513 | 859-1016 |
| 5771 | BRAZIER, WILLIAM L. | 354 | 882-8197 | GUNTERS'V'L 583-4307 |
| 5335 | BREMER, GEORGE D. | 321 | 882-8356 | 852-9471 |
| 5785 | BREWER, DENNIS R., JR. | 554 | 882-8291 | 859-1770 |
| 1352 | BREWER, JAMES L. | 591 | 882-8521 | 539-7523 |
| 2675 | BRIDGES, ALVIE D. | 334 | 882-8137 | 852-4534 |

| TC# | NAME | SEC.# | OFFICE PHONE | HOME PHONE |
|--|----------------------|-------|---------------------|---------------|
| 5538 | BRIDGES, JOYCE K. | 434 | 882-8240 | 533-5363 |
| 0781 | BRITTON, ROBERT S. | 614 | 882-8165 HAZEL GRN | 828-0308 |
| 5796 | BROOKS, EDWIN W. | 613 | 882-8513 MORGAN CTY | 498-3489 |
| 0189 | BROOKS, LLOYD E. | 712 | 882-8344 MORGAN CTY | 498-2766 |
| 1485 | BROOKS, ROBERT J. | 713 | 882-8461 HAZEL GRN | 828-3576 |
| 0131 | BROWN, JOHN D. | 614 | 882-8151 | 881-7583 |
| 5766 | BROWN, STEPHEN L. | 713 | 882-8404 | 882-0144 |
| 5728 | BROWN, TIMOTHY | 613 | 882-8382 GUNTERSV'L | 582-4002 |
| 1759 | BRUBAKER, BRYCE D. | 432 | 882-8229 | 536-2464 |
| 3264 | BRYAN, I. J. | 621 | 882-8146 GUNTERSV'L | 582-4016 |
| 5131 | BRYANT, CHARLES T. | 432 | 882-8227 | 883-0242 |
| 3574 | BUFORD, JOHN E. | 614 | 882-8158 OWENS X-RD | 725-4471 |
| 0571 | BULLINGTON, JOHN H. | 641 | 882-8117 ATHENS | 232-4285 |
| 0057 | BURKS, GORDON D. | 554 | 882-8492 | 837-3375 |
| 5831 | BURNET, JERRY L. | 553 | 882-8293 | 536-7534 |
| 0139 | BURROUGHS, CARTER E. | 353 | 882-8290 | 881-0819 |
| 5601 | BURROUGHS, SUSAN L. | 473 | 882-8494 | 536-7024 |
| 5695 | BURTON, CHARLES H. | 552 | 882-8185 GRANT | 723-4093 |
| 5819 | BUTLER, PAMELA M. | 553 | 882-8196 | 852-5045 |
| 5428 | BUTTS, RODNEY G. | 641 | 882-8495 | 882-0665 |
| 4983 | BYESS, WILLIAM D. | 554 | 882-8516 MORGAN CTY | 498-2683 |
| 4591 | BYRD, JAMES D. | 472 | 882-8383 | 881-1857 |
| 5871 | BYRD, JOHN H. | 354 | 882-8293 HAZEL GRN | 828-5111 |
| CC | | | | |
| 5463 | CADMAN, TIMOTHY K. | 554 | 882-8186 | 837-9584 |

| TC# | NAME | SEC.# | OFFICE PHONE | | HOME PHONE |
|------|-------------------------|-------|-----------------|------------|---------------|
| 1053 | CADMAN, VERL C. | 612 | 882-8150 | ATHENS | 232-6873 |
| 0648 | CAGLE, LEO F. | 553 | 882-8194 | | 837-6339 |
| 5764 | CAIN, BOBBY J. | 354 | 882-8188 | ALBERTV'L | 878-7552 |
| 4002 | CAMPBELL, RICHARD E. | 472 | 882-8399 | HARVEST | 859-5767 |
| 5244 | CAMPBELL, O. S. (SANDY) | 861 | 882-8105 | ATHENS | 232-6256 |
| 5438 | CANTERBURY, DONALD B. | 851 | 882-8416 | | 882-1877 |
| 5844 | CANTERBERRY, J. B. | 472 | 882-8389 | | 852-5558 |
| 0840 | CARLISLE, HAROLD W. | 621 | 882-8147 | | 852-7057 |
| 5825 | CARLISLE, THOMAS W. | 553 | 882-8292 | | 539-6903 |
| 5529 | CARMACK, WILLIAM F. | 621 | 882-8146 | ARAB | 498-2089 |
| 5667 | CARROLL, MURRAY A. | 552 | 882-8184 | | 881-7930 |
| 2119 | CASH, MARY S. | 361 | 882-8219 | | 536-4183 |
| 5491 | CAUTHEN, ROSIE MAE | 553 | 882-8121 | DECATUR | 859-9503 |
| 2674 | CHAFFIN, BETTY B. | 854 | 882-8306 | SOMERV'L | 355-4382 |
| 5700 | CHAMNESS, JANE E. | 613 | 882-8369 | UNION GRV | 753-2396 |
| 4811 | CHAMNESS, ROBERT O. | 554 | 882-8188 | ARAB | 586-3934 |
| 0260 | CHAMPION, S.L. | 591 | 882-8401 | | 852-2996 |
| 5611 | CHANDLER, J. STEVE | 555 | 882-8186 | HAZEL GRN | 828-4641 |
| 5562 | CHANEY, BOBBY F. | 612 | 882-8152 | HARTSELLE | 778-8293 |
| 5773 | CHAPMAN, PATRICIA D. | 641 | 882-8173 | HARVEST | 837-8168 |
| 5872 | CHATMAN, LOYSE T. | 353 | 882-8192 | VAL. SPGS. | 778-8632 |
| 0808 | CHILDERS, BILLY M. | 612 | 882-8150 | HAZEL GRN | 828-4647 |
| 0096 | CHILDRESS, KENNETH L. | 712 | 882-8344 | | 534-6550 |
| 2472 | CHRISTIAN, CHARLES M. | 472 | 882-8385 | | 881-9592 |
| 5066 | CHRISTIAN, JAMES R. | 612 | 882-8150 | ALBERTV'LE | 878-6541 |

| TC# | NAME | SEC.# | OFFICE PHONE | HOME PHONE |
|------|------------------------|-------|-------------------------|---------------|
| 3551 | CLARK, H.TOM | 434 | 882-8240 | 534-2673 |
| 5841 | CLARK, HELEN C. | 712 | 882-8315 NEW HOPE | 723-2187 |
| 5863 | CLARK, JAMES T. | 553 | 882-8196 | 539-5422 |
| 1068 | CLARK, ROBERT D. | 712 | 882-8344 | 536-2645 |
| 5382 | CLARK, TASKA S. | 213 | 882-8454 NEW MARKET | 379-3285 |
| 1996 | CLAYTON, A.W. | 472 | 882-8410 OWNS X'RDS | 725-4123 |
| 4293 | CLEMENTS, JAMES RONALD | 432 | 882-8226 ²⁷¹ | 883-9871 |
| 5829 | COATES, VICTOR LANE | 321 | 882-8530 MADISON | 837-6075 |
| 5678 | COBB, CARLA R. | 521 | 882-8419 | 852-2795 |
| 2811 | COBBLE, JOHN H. | 554 | 882-8187 BLANCHE | 425-6350 |
| 5631 | COBURN, EMILY R. | 515 | 882-8447 | 882-1954 |
| 5370 | COLLIER, EDWARD N. | 591 | 882-8271 ²⁹⁹ | 883-0754 |
| 4853 | COLLINGWOOD, GERALD A. | 435 | 882-8138 | 837-6778 |
| 5830 | COMBS, BARBARA S. | 361 | 882-8528 | 882-9121 |
| 0029 | COMPTON, HERSHEL R. | 612 | 882-8150 MORGAN CTY | 498-2236 |
| 5694 | COMPTON, JAMES D. | 321 | 882-8317 DECATUR | 350-5285 |
| 5846 | COMPTON, LARRY A. | 552 | 882-8184 CULLMAN | 734-8467 |
| 5770 | CONDO, GEANNIE C. | 473 | 882-8494 HARTSELLE | UNLISTED |
| 5034 | CONNALLY, BOBBY C. | 614 | 882-8157 NEW HOPE | 723-4659 |
| 1849 | COOLEY, GEORGE W. | 434 | 882-8258 | 881-1598 |
| 5502 | COOPER, DON R. | 554 | 882-8492 SOMERVILLE | 498-2932 |
| 5860 | COSBY, JEFFREY L. | 332 | 882-8475 TUSCUMBIA | 383-9301 |
| 3285 | COSBY, WILLIAM J., JR. | 552 | 882-8184 TUSCUMBIA | 383-9301 |
| 5031 | COTHREN, HERBERT, M.JR | 612 | 882-8151 FAYETTEV'L | 433-0361 |
| 5416 | COX, RICHARD W. | 434 | 882-8250 | 852-1988 |

| TC# | NAME | SEC.# | OFFICE PHONE | HOME PHONE |
|------|----------------------|-------|---------------------|------------|
| 5325 | DORNING, RUTH B. | 214 | 882-8464 | 837-1289 |
| 0812 | DOUGLASS, OSCAR E. | 614 | 882-8165 ARAB | 586-4262 |
| 2073 | DRAKE, JAMES L. | 332 | 882-8150 | 539-0197 |
| 0362 | DRAKE, RICHARD C. | 612 | 882-8150 | 534-3612 |
| 5581 | DRISKILL, CHARLES E. | 613 | 882-8513 CROSSVILLE | 561-3778 |
| 5060 | DUDLEY, ROBERT J. | 612 | 882-8150 HARTSELLE | 778-8654 |
| 0450 | DUNCAN, BION W. | 552 | 882-8184 | 534-0327 |
| 0170 | DUNN, THEOPHILUS | 614 | 882-8162 MORGAN CTY | 498-2690 |
| 1225 | DYE, CHARLES BOYD | 473 | 882-8159 ALBERTV'L | 878-1548 |

EE

| | | | | |
|------|-----------------------|-----|------------------|----------|
| 0327 | EAST, BILLY R. | 554 | 882-8197 | 534-0293 |
| 4938 | EAST, STEPHEN R. | 641 | 882-8119 | 539-0019 |
| 4090 | EATON, JIMMIE D. | 852 | 882-8139 | 881-0243 |
| 5030 | EDMONDS, L. FAYE | 521 | 882-8277 | 881-3625 |
| 5763 | EINAR, E. | 554 | 882-8492 | |
| 5734 | ELLINGTON, DAVID J. | 434 | 882-8242 | 536-8173 |
| 5686 | ELMORE, SUSAN K. | 214 | 882-8464 MADISON | 772-0305 |
| 5386 | EMFINGER, FORREST E. | 853 | 882-8305 | 882-0127 |
| 3241 | ENGLISH, R. HILL, JR. | 434 | 882-8248 | 881-4973 |
| 0492 | ENTREKIN, JAMES E. | 552 | 882-8185 | 881-4429 |
| 1607 | EPPS, JOHN S. | 721 | 882-8319 | 881-1171 |
| 4891 | ESTES, ALFRED G. | 435 | 882-8254 | 881-8209 |
| 2075 | ETHERIDGE, WILLIAM | 723 | 882-8339 | 536-9739 |
| 5583 | EVANS, CHRIS R. | 554 | 882-8492 | 883-0012 |
| 5849 | EVANS, STANLEY G. | 321 | 882-8360 | 852-6922 |

| TC# | NAME | SEC.# | OFFICE PHONE | HOME PHONE |
|------|----------------------|-------|-----------------|----------------------|
| 0510 | GARRISON, GORDON W. | 712 | 882-8344 | 534-9922 |
| 2557 | GASAWAY, JAMES W. | 432 | 882-8228 | DECATUR 353-7199 |
| 1109 | GATLIN, JOE R. | 332 | 882-8123 | 534-2858 |
| 5878 | GENTLE, BRUCE E. | 614 | 882-8151 | 859-0885 |
| 5083 | GENTLE, THOMAS V. | 554 | 882-8516 | 852-1345 |
| 5835 | GIBSON, SANDRA D. | 435 | 882-8262 | GUNTERS'V'L 582-0129 |
| 5566 | GLASSCO, MARCUS, S. | 613 | 882-8479 | ALBERTV'LE 878-5463 |
| 0400 | GLENN, WILLIAM R. | 631 | 882-8208 | 852-0417 |
| 4897 | GOBBLE, LARRY D. | 613 | 882-8479 | ARAB 586-5108 |
| 0343 | GODSEY, JACK C. | 701 | 882-8107 | GRANT 582-6005 |
| 3396 | GOOCH, THOMAS R. | 361 | 882-8438 | 881-4765 |
| 5187 | GOODE, R. WRAY | 712 | 882-8340 | 883-9095 |
| 0553 | GRAHAM, JAMES R. | 712 | 882-8344 | MADISON 772-3611 |
| 4884 | GRAHAM, W. H. (BILL) | 472 | 882-8397 | 881-6386 |
| 3183 | GRAVES, ARLIN E. | 432 | 882-8229 | 881-3358 |
| 3986 | GRAVES, EMMETT E. | 613 | 882-8513 | 533-3821 |
| 0204 | GREEN, GEORGE W. | 614 | 882-8160 | 859-1812 |
| 1039 | GREEN, L. E. | 472 | 882-8392 | 852-3294 |
| 0985 | GREEN, LAWRENCE V. | 621 | 882-8146 | 837-6389 |
| 0754 | GREENHAW, JOHN W. | 554 | 882-8516 | 536-7664 |
| 5450 | GREISING, BRUCE J. | 434 | 882-8239 | 837-6826 |
| 1885 | GRIDER, JOHN E. | 541 | 882-8273 | 881-7788 |
| 5658 | GRIFFIN, MARK A. | 554 | 882-8197 | ATHENS 232-2254 |
| 0242 | GRIFFITH, GROVER G. | 473 | 882-8378 | 852-0351 |
| 5674 | GRIMES, JERRY A. | 554 | 882-8186 | DECATUR 350-1352 |

| TC# | NAME | SEC.# | OFFICE PHONE | HOME PHONE |
|------|------------------------|-------|-----------------|---------------------|
| 5555 | HASTINGS, LEON D. | 714 | 882-8345 | 536-4654 |
| 3552 | HAWKINS, OSCAR M. | 553 | 882-8192 | 852-0900 |
| 1948 | HAYES, ALTON P. | 713 | 882-8179 | 881-4477 |
| 5834 | HAYES, MADELYN | 213 | 882-8455 | 534-3339 |
| 0379 | HAYES, MORGAN | 621 | 882-8146 | 881-2262 |
| 0972 | HAYGOOD, RICHARD E. | 621 | 882-8159 | 859-3071 |
| 0797 | HEATON, VICTOR E. | 724 | 882-8326 | 881-2743 |
| 2401 | HENDERSON, JAMES W. | 723 | 882-8339 | ARDMORE 427-3142 |
| 1396 | HENRY, GEORGE B. | 621 | 882-8146 | 882-9518 |
| 5518 | HEPLER, SHERYL H. | 434 | 882-8235 | 859-5362 |
| 0592 | HERBERT, B.D. | 501 | 882-8436 | 881-2486 |
| 5413 | HERMAN, MARY B. (GWEN) | 321 | 882-8525 | 881-3784 |
| 5376 | HESS, WILLIAM D. | 321 | 882-8302 | LEXINGTON 229-5577 |
| 2298 | HESSLER, R.O. | 435 | 882-8252 | |
| 5356 | HICKLEN, DANNY S. | 613 | 882-8479 | FAYETTV'L |
| 0348 | HICKLEN, DAVID K. | 722 | 882-8310 | 536-6770 |
| 5713 | HICKS, KENNETH | 554 | 882-8188 | 533-4548 |
| 1940 | HIGHTOWER, JIM O. | 472 | 882-8412 | 881-2977 |
| 5752 | HILL, LOWELL H. | 554 | 882-8293 | JOPPA 586-3716 |
| 0485 | HILL, RALPH A. | 621 | 882-8146 | MORGAN CTY 498-2272 |
| 4976 | HILL, SHELBY W. | 553 | 882-8187 | NEW HOPE 723-4299 |
| 5551 | HINES, CHARLES M. | 852 | 882-8380 | 881-9139 |
| 5795 | HODGES, DENNIE E. | 612 | 882-8369 | ARDMORE 427-6411 |
| 4896 | HOLLAWAY, CHARLES G. | 613 | 882-8382 | UNION GRV 498-2323 |
| 3017 | HOLLEY, JOSEPH W. | 611 | 882-8176 | 881-3118 |

| TC# | NAME | SEC.# | OFFICE PHONE | HOME PHONE |
|--|-------------------------|-------|-----------------|---------------------|
| 4151 | JONES, CHARLES O. | 541 | 882-8520 | 883-6886 |
| 1203 | JONES, FAYE R. | 704 | 882-8377 | DECATUR 350-6048 |
| 5602 | JONES, GREGORY C. | 703 | 882-8345 | LACEY'S SPG883-6994 |
| 5313 | JONES, MARVIN C. | 434 | 882-8239 | 882-1188 |
| 0511 | JONES, WILLIAM | 614 | 882-8162 | 859-0712 |
| 1037 | JORDAN, HERBERT J., JR. | 612 | 882-8150 | 881-2077 |
| 0564 | JUNIOR, KENNETH E. | 472 | 882-8391 | 837-2879 |
| KK | | | | |
| 0892 | KARABINOS, ANDREW R. | 213 | 882-8459 | 852-4106 |
| 5618 | KAVANAGH, PATRICIA | 435 | 882-8237 | 883-7609 |
| 0912 | KAY, AUDREY E. | 724 | 882-8296 | 881-0737 |
| 2108 | KAY, CLAYTON W. | 214 | 882-8465 | HAZEL GRN 828-3324 |
| 5711 | KEEL, ROBERT E. | 613 | 882-8382 | OWNS X RDS 725-4758 |
| 5337 | KELLER, WILLIAM G. | 614 | 882-8156 | NEW HOPE 723-4457 |
| 5767 | KELLEY, GRACE E. | 852 | 882-8106 | 830-4043 |
| 4423 | KELLEY, THOMAS H. | 212 | 882-8425 | 881-8454 |
| 1279 | KELLY, JOHN H. | 432 | 882-8222 | HARTSELLE 773-6598 |
| 5616 | KELLY, MARIA ANNETTE | 331 | 882-8128 | NEW HOPE 723-2473 |
| 0280 | KEMP, M. JOE | 591 | 882-8423 | 534-0336 |
| 5623 | KENNEDY, TERRY L. | 432 | 882-8222 | TONEY 233-2747 |
| 5368 | KENNEDY, WILLIAM C. | 713 | 882-8478 | 882-0965 |
| 0114 | KERR, JACK F. | 712 | 882-8340 | 837-0908 |
| 0626 | KEY, ROBERT L., JR. | 724 | 882-8313 | MOULTON 974-0103 |
| 0469 | KIDD, MAJOR W. | 613 | 882-8382 | 852-4120 |
| 2537 | KILLIAN, BETTY "JO" | 301 | 882-8178 | MADJSON 772-3651 |

NOX

| TC# | NAME | SEC.# | OFFICE PHONE | HOME PHONE |
|------|-----------------------|-------|---------------------|---------------|
| 1971 | LEE, CREIGHTON C. | 101 | 882-8182 | 881-1778 |
| 1886 | LEE, JAMES W. | 434 | 882-8243 | 881-0527 |
| 5629 | LEE, TSIN N. | 435 | 882-8254 | 881-9251 |
| 5665 | LEMASTER, WILLIAM E. | 554 | 882-8291 GRANT | 728-4381 |
| 0141 | LEMONS, GENE L. | 333 | 882-8131 ARAB | 586-4285 |
| 0434 | LEMONS, JOHN LESTER | 612 | 882-8150 ARAB | 586-8877 |
| 5610 | LESTER, JAMES C. | 852 | 882-8215 FAYETTV'L | 937-8957 |
| 5708 | LEWIS, GARY W. | 722 | 882-8338 ATHENS | 233-0134 |
| 5637 | LEWIS, MAURICE R. | 852 | 882-8416 | 881-8415 |
| 5116 | LIDDIE, JAMES G. | 713 | 882-8327 BLANCHE | 425-6724 |
| 0983 | LIGHT, JOSEPH W. | 552 | 882-8183 MORGAN CTY | 498-2113 |
| 5614 | LINCOLN, WILLIAM B. | 554 | 882-8293 GUNTERSV'L | 582-5351 |
| 5612 | LINDSAY, JIMMIE R. | 852 | 882-8140 JOPPA | 796-2133 |
| 4924 | LIPSEY, BOBBY R. | 613 | 882-8369 CULLMAN | 734-7243 |
| 5862 | LIPSCOMB, ROSEMARY H. | 333 | 882-8534 | 883-8974 |
| 5702 | LITTLES, JESSE D. | 554 | 882-8186 SCOTTSBORO | 574-3933 |
| 2717 | LLOYD, JULIUS E. | 473 | 882-8494 | 883-1311 |
| 5814 | LOCKHART, CHRISTOPHER | 554 | 882-8516 | 852-7145 |
| 5593 | LOGAN, CECIL R. | 853 | 882-8307 | 881-6755 |
| 5826 | LONG, JASON K. | 723 | 882-8298 ATHENS | 233-2253 |
| 5292 | LUKE, DOROTHY P. | 211 | 882-8433 | 539-8688 |
| 5548 | LUTZ, KATHLEEN, M. | 712 | 882-8323 | 830-8211 |
| 5824 | LYNN, GARY R. | 553 | 882-8196 | 534-8050 |
| 0574 | LYNN, ROBERT M. | 722 | 882-8312 | 536-8466 |
| 5417 | LYON, TED W. | 712 | 882-8340 OWENS X-RD | 725-4490 |

| TC# | NAME | SEC. # | OFFICE PHONE | HOME PHONE |
|--|----------------------|--------|---------------------|---------------|
| MM | | | | |
| 5627 | MAALIS, ARNOLD W. | 853 | 882-8305 MADISON | 830-4944 |
| 5630 | MADDOX, TEDDY M. | 432 | 882-8260 MADISON | 772-9796 |
| 0381 | MAGNUSSON, E.J. | 723 | 882-8328 | 837-0848 |
| 0323 | MANGUM, G.F. | 541 | 882-8276 | 881-0339 |
| 1364 | MARLIN, JOHN D., III | 473 | 882-8524 ATHENS | 232-1402 |
| 1604 | MARONEY, VERNON L. | 712 | 882-8344 | 837-0807 |
| 5698 | MARSH, CECIL W. | 554 | 882-8291 ARAB | 586-4458 |
| 5613 | MARSH, CHARLES R. | 553 | 882-8194 SCOTTSBORO | 259-5184 |
| 2961 | MARTIN, HORACE H. | 332 | 882-8126 NEW MARKET | |
| 5806 | MARTIN, JAMES B. | 613 | 882-8516 | 859-2622 |
| 5806 | MARTIN, JAMES B. | 613 | 859-2622 | 859-2622 |
| 2161 | MARTIN, JOHN P. | 613 | 882-8479 MORGAN CTY | 498-2507 |
| 5787 | MARTIN, MICHAEL A. | 614 | 882-8164 UNION GRV | 498-2507 |
| 4671 | MASER, DENNIS D. | 852 | 882-8106 | 881-7663 |
| 5855 | MASSEY, JOHNNY M. | 554 | 882-8492 CROSSVILLE | 561-3623 |
| 5636 | MATTOX, DONALD L. | 434 | 882-8235 | 881-9411 |
| 0180 | MAULDIN, THURMAN N. | 521 | 882-8483 | 534-4453 |
| 5132 | MAYES, CARL D. | 713 | 882-8403 | 883-9569 |
| 2162 | MAYFIELD, RAYMOND I. | 713 | 882-8322 ARAB | 586-8560 |
| 5383 | MAYNOR, BILLY J. | 554 | 882-8291 | 539-7039 |
| 5704 | MAZE, GARRY L. | 472 | 882-8393 ARAB | 586-7296 |
| 5743 | MCALLISTER, JAMES W. | 553 | 882-8196 STEVENSON | 437-2402 |
| 5709 | MCBRIDE, GARY D. | 333 | 882-8133 GRANT | 728-4648 |
| 5112 | MCCAIN, J. WAYNE | 213 | 882-8537 | 536-2241 |

| TC# | NAME | SEC.# | OFFICE PHONE | HOME PHONE |
|------|-----------------------|-------|-----------------|---------------------|
| 1726 | MCCALEB, JAMES D. | 332 | 882-8124 | 539-1320 |
| 1351 | MCCAULEY, ROGER C. | 591 | 882-8268 | 881-5660 |
| 4779 | MCCAULLEY, WILLIE L. | 613 | 882-8479 | 859-6700 |
| 5401 | MCCLAIN, DONALD R. | 554 | 882-8188 | 536-9824 |
| 5639 | MCCORMICK, I. RAY | 554 | 882-8291 | FLINTVILLE 937-6174 |
| 3346 | MCCUTCHEON, DONALD J. | 321 | 882-8303 | 534-4210 |
| 5540 | MCDEARMOND, KEITH A. | 613 | 882-8382 | JOPPA 586-7177 |
| 0815 | MCDONALD, G.W. | 614 | 882-8162 | 536-4349 |
| 5377 | MCDONALD, JAMES A. | 553 | 882-8481 | 881-9551 |
| 3798 | MCELROY, QUINTON V. | 321 | 882-8360 | ARAB 586-4050 |
| 2565 | MCFALL, PAUL R. | 432 | 882-8207 | 881-1235 |
| 0854 | MCGEE, JOHN E. | 613 | 882-8382 | ATHENS 232-5464 |
| 5621 | MCKENZIE, MARGARET B. | 432 | 882-8255 | MADISON 837-6046 |
| 3615 | MCLEMORE, ALVIS M. | 334 | 882-8137 | ATHENS 232-3576 |
| 5663 | MCLEMORE, DAVID F. | 553 | 882-8194 | SOMMERV'L 498-2583 |
| 5545 | MCPAHAN, JAN M. | 591 | 882-8491 | 883-1040 |
| 5573 | MEAGHER, MICHAEL F. | 713 | 882-8373 | 882-1996 |
| 5800 | MEEKS, CRAIG L. | 612 | 882-8150 | 852-4138 |
| 0275 | MEHARG, TOM B. | 712 | 882-8340 | ARAB 586-3354 |
| 5510 | MEREDITH, WILEY | 554 | 882-8516 | CAPSHAW 232-7739 |
| 0984 | MESSER, JAMES T., JR. | 621 | 882-8146 | 881-3509 |
| 0748 | MILLER, LAWRENCE J. | 712 | 882-8344 | GURLEY 776-2242 |
| 4375 | MILLER, MEREDITH | 212 | 882-8450 | 881-8573 |
| 5328 | MISKELLY, HERMAN L. | 432 | 882-8228 | 881-1956 |
| 0265 | MITCHELL, CHARLES M. | 512 | 882-8449 | 881-1609 |

| TC# | NAME | SEC.# | OFFICE PHONE | HOME PHONE |
|------|--------------------------|-------|-----------------|---------------------|
| 0291 | SCHWARZ, WILLIAM W. | 472 | 882-8388 | 883-4861 |
| 4567 | SCHWARZE, FRANKLIN | 552 | 882-8498 | 881-0241 |
| 0342 | SCOGGIN, MILLIARD F. | 472 | 882-8392 | DECATUR 353-8719 |
| 5768 | SCOTT, ANTHONY (nmi) | 435 | 882-8263 | 883-4665 |
| 5400 | SEARS, SHARON R. | 621 | 882-8149 | 533-2270 |
| 5554 | SEIGH, JOHN C. | 434 | 882-8236 | 536-4956 |
| 5654 | SEILER, DAVID J. | 724 | 882-8296 | 882-3218 |
| 0886 | SELLERS, HOMER H. | 432 | 882-8256 | 881-3014 |
| 4243 | SELLERS, PAULETTE W. | 341 | 882-8350 | FAYETTEV'L 433-4899 |
| 5699 | SELVAGE, JAMES G. | 613 | 882-8513 | 593-7682 |
| 5788 | SHARP, DUDLEY F. | 473 | 882-8159 | SOMERVILLE 778-7312 |
| 5205 | SHARPE, CHARLES W. | 332 | 882-8122 | NEW MARKET 379-2324 |
| 5334 | SHELTON, JACKY | 554 | 882-8291 | FAYETTEV'L 433-1753 |
| 1042 | SHEPARD, HOWARD N. | 614 | 882-8156 | FLINTVILLE 937-8787 |
| 4839 | SHEPARD, I.G. (ANNE) | 472 | 882-8384 | 852-0553 |
| 2359 | SHIELDS, LINDA S. | 551 | 882-8371 | ATHENS 232-5373 |
| 5797 | SHIELDS, TERENCE H. | 613 | 882-8382 | GUNTERSV'L 582-6826 |
| 5736 | SHOWALTER, FRANK B., Jr. | 551 | 882-8496 | GUNTERSV'L 582-8219 |
| 5647 | SHULL, H. JEANETTE | 852 | 882-8304 | SOMMERSV'L 355-4054 |
| 0346 | SHUMATE, GORDON W. | 712 | 882-8344 | MORGAN CTY 498-2307 |
| 4461 | SIMMONS, GINGER M. | 701 | 882-8301 | ALBERTV'LE 878-0527 |
| 5465 | SIMONDS, DARRELL E. | 614 | 882-8160 | Unlisted |
| 5634 | SIMPSON, FRED L. | 332 | 882-8125 | 859-3322 |
| 2639 | SIMS, ESTHA M. | 722 | 882-8311 | HARTSELLE 773-3769 |
| 3709 | SLATEN, THOMAS B. | 613 | 882-8157 | DECATUR 355-6269 |

| TC# | NAME | SEC.# | OFFICE PHONE | | HOME PHONE |
|------|----------------------|-------|-----------------|------------|---------------|
| 0223 | SLOAN, NED R. | 621 | 882-8146 | ATHENS | 232-3211 |
| 5456 | SMITH, BOBBY L. | 613 | 882-8513 | HARVEST | 837-9346 |
| 5697 | SMITH, GARY D. | 473 | 882-8159 | UNION GRV | 498-2406 |
| 5355 | SMITH, JOAN B. | 472 | 882-8397 | | 883-6804 |
| 4936 | SMITH, JOSEPH B. | 553 | 882-8292 | HAZEL GRN | 828-0556 |
| 1230 | SMITH, KENNETH C. | 214 | 882-8464 | MADISON | 772-3188 |
| 5156 | SMITH, NORMAN C. | 614 | 882-8160 | SOMERVILLE | 778-8589 |
| 5657 | SMITH, REBECCA JANE | 321 | 882-8357 | | 85-0674 |
| 5326 | SMITH, ROBERT A. | 434 | 882-8258 | | 852-9605 |
| 5558 | SMITH, SHELBY | 553 | 882-8196 | | 539-0966 |
| 1861 | SMITH, W.C. | 601 | 882-8109 | | 536-4198 |
| 5049 | SNEAD, JUANITA H. | 341 | 882-8349 | | 859-2138 |
| 3155 | SNEED, R. HERSCHEL | 472 | 882-8393 | GURLEY | 723-2270 |
| 1966 | SNOWDEN, RALPH W. | 434 | 882-8249 | | 852-4763 |
| 5861 | SOCKWELL, CHARLES E. | 332 | 882-8121 | MUS SHOALS | 383-0364 |
| 5096 | SOFFES, JOHN D. | 614 | 882-8160 | HAZEL GRN | 828-0653 |
| 4829 | SORTER, BILLY R. | 621 | 882-8146 | | 586-3059 |
| 5532 | SORTER, C. DIANE | 591 | 882-8268 | ARAB | 586-3059 |
| 5288 | SOUTH, ANNETTE | 714 | 882-8343 | ALBERTV'L | 891-0311 |
| 0514 | SPEARMAN, WILLIAM L. | 551 | 882-8197 | | 852-1756 |
| 5845 | SPETH, T. JED | 591 | 882-8420 | | 882-6632 |
| 5721 | STAGGS, STEVE J. | 553 | 882-8481 | ATHENS | 729-6961 |
| 5692 | STANLEY, ROBERT LEE | 472 | 882-8376 | | 883-4703 |
| 4456 | STAYTON, WINFRED F. | 553 | 882-8187 | HAZEL GRN | 828-3545 |
| 5439 | STEELMAN, LLOYD W. | 613 | 882-8513 | HAZEL GRN | 828-5288 |

| TC# | NAME | SEC.# | OFFICE PHONE | HOME PHONE |
|------|-----------------------|-------|----------------------|---------------|
| 5225 | THOMAS, C. STANLEY | 853 | 882-8305 | 533-3857 |
| 3686 | THOMAS, E. MARIE | 201 | 882-8421 WOODVILLE | 776-2633 |
| 0615 | THOMAS, JAMES E. | 332 | 882-8475 MORGAN CTY | 498-2598 |
| 5823 | THOMAS, JEANNIE H. | 554 | 882-8516 ATHENS | 232-3857 |
| 5881 | THOMAS, JOHN R. | 612 | 882-8150 SCOTTSB'RO | 574-1595 |
| 1510 | THOMAS, RICHARD E. | 431 | 882-8230 HARVEST | 830-2350 |
| 5640 | THOMAS, SHERRELL W. | 554 | 882-8291 | 837-3349 |
| 4776 | THOMPSON, ARCHIE L. | 621 | 882-8146 | 852-3392 |
| 5486 | THOMPSON, LINDA | 541 | 882-8422 SOMERVILLE | 778-7589 |
| 0575 | THRONEBERRY, JAMES W. | 361 | 882-8439 | 534-4367 |
| 2700 | TILGHMAN, COOPER R. | 521 | 882-8118 | 881-2706 |
| 1157 | TIPTON, CHARLIE G. | 332 | 882-8125 | 852-5527 |
| 1159 | TIPTON, JO | 333 | 882-8134 | 852-5527 |
| 5015 | TOLTON, BILLY W. | 554 | 882-8197 ARAB | 586-6893 |
| 5576 | TOWNSEND, JAMES E. | 613 | 882-8513 | 852-4508 |
| 4442 | TRAYLOR, BOBBY L. | 714 | 882-8345 GURLEY | 776-9507 |
| 5534 | TREHERN, DEBBE D. | 854 | 882-8218 | 852-7389 |
| 5719 | TUCKER, HARRY E. | 553 | 882-8194 | 878-3451 |
| 0611 | TUCKER, JAMES W. | 332 | 882- 8121 | 852-0646 |
| 5557 | TURNER, BRENDA F. | 851 | 882-8211 PAINT ROCK | 776-2259 |
| 0555 | TURNER, CHARLES T. | 614 | 882-8158 | 837-4668 |
| 2542 | TURNER, D.B. | 591 | 882-8414 ATHENS | 233-0607 |
| 5541 | TURNER, GENE A. | 554 | 882-8188 | 534-8595 |
| 5113 | TURNER, GERALDINE | 551 | 882-8189 | 859-2083 |
| 0499 | TURNER, JOHN HENRY | 614 | 882-8162 | 536-4744 |

| TC# | NAME | SEC.# | OFFICE PHONE | HOME PHONE |
|------|------------------------|-------|---------------------|---------------|
| 0017 | WALL, RICHARD H. | 401 | 882-8434 | 881-3064 |
| 5807 | WALL, WESLEY T. | 613 | 882-8513 ELORA, TN | 937-6352 |
| 5864 | WALTER, BRIAN H. | 852 | 882-8380 | 859-6582 |
| 3456 | WALLACE, C. DAVE, JR. | 541 | 882-8282 | 881-3417 |
| 4320 | WALLACE, WILL H. | 713 | 882-8320 | 534-1354 |
| 2114 | WALTER, JAMES M. | 214 | 882-8465 ARAB | 498-3104 |
| 5479 | WALTER, PATRICIA D. | 612 | 882-8150 MORGAN CTY | 498-3104 |
| 5843 | WARD, JOHNNY L. | 214 | 882-8464 | 534-4932 |
| 3595 | WARD, ROBERT W. | 613 | 882-8157 | 859-0232 |
| 2828 | WARREN, ROBERT M. | 333 | 882-8309 DECATUR | 353-5695 |
| 4828 | WEAVER, GROVER H., JR. | 724 | 882-8296 | 534-6779 |
| 3286 | WEBB, GLENN E. | 541 | 882-8284 | 881-3645 |
| 1909 | WEBB, HAROLD | 591 | 882-8272 | 837-3477 |
| 1697 | WEBB, JERRY J. | 711 | 882-8374 | 536-9340 |
| 5781 | WECKWARTH, CRAIG S. | 432 | 882-8255 | 881-6155 |
| 0871 | WEEKS, WALTER N. | 614 | 882-8160 HAZEL GRN | 828-4412 |
| 1095 | WELLS, DAVID R. | 621 | 882-8146 ATHENS | 232-4235 |
| 1361 | WELLS, JOSEPH F. | 553 | 882-8194 | 881-4685 |
| 5238 | WELLS, RANDAL L. | 613 | 882-8382 | 852-2258 |
| 0701 | WEST, CLARENCE D. | 712 | 882-8344 ARAB | 586-4871 |
| 5817 | WEST, JOHN S. | 852 | 882-8215 FLORENCE | 766-6427 |
| 5515 | WEYLER, MICHAEL | 612 | 882-8150 | 837-1329 |
| 1521 | WHISENANT, MARY B. | 541 | 882-8274 ARAB | 586-4691 |
| 1788 | WHISENANT, ROBERT L. | 332 | 882-8125 ARAB | 586-4691 |
| 3943 | WHISENANT, TROY O. | 332 | 882-8340 MORGAN CTY | 498-3284 |

| TC# | NAME | SEC.# | OFFICE PHONE | HOME PHONE |
|------|-----------------------|-------|---------------------|---------------|
| 0545 | WHITE, BARBEE F. | 332 | 882-8538 HAZEL GRN | 828-3895 |
| 0779 | WHITE, BILLY W. | 621 | 882-8146 HAZEL GRN | 828-4894 |
| 5733 | WHITE, EVELINE | 541 | 882-8520 NEW MARKET | 379-3361 |
| 2790 | WHITE, RADER M. | 334 | 882-8135 CULLMAN | 734-8006 |
| 3281 | WHITE, RALPH E. | 214 | 882-8464 | 881-1482 |
| 5809 | WHITLEY, JERRY G. | 554 | 882-8291 ARAB | 586-4921 |
| 4600 | WHITESIDES, R. HAROLD | 434 | 882-8238 ARAB | 498-3381 |
| 1491 | WILBOURNE, ERWIN C. | 552 | 882-8185 | 881-0639 |
| 1674 | WILKERSON, BLAKE | 631 | 882-8175 FAYETTEV'L | 433-6923 |
| 5805 | WILKERSON, MICHAEL B. | 613 | 882-8513 FAYETTEV'L | 433-5809 |
| 4833 | WILLIAMS, CARL L. | 621 | 882-8146 DECATUR | 350-3523 |
| 5691 | WILLIAMS, CHARLES E. | 553 | 882-8492 ALBERTV'L | 878-5428 |
| 5622 | WILLIAMS, ELMER E. | 553 | 882-8194 SCOTTSBORO | 259-6428 |
| 2762 | WILLIAMS, JAMES R. | 552 | 882-8183 | 881-0624 |
| 0143 | WILLIAMS, JOHN L. | 713 | 882-8330 | 534-3889 |
| 5701 | WILLIAMS, JOHN M. | 613 | 882-8479 ARAB | 586-6867 |
| 5732 | WILLIAMS, MARY ANN | 591 | 882-8415 | 539-4361 |
| 5879 | WILLIAMS, ROBERT G. | 614 | 882-8151 | 539-8414 |
| 2274 | WILLIS, ROY T. | 515 | 882-8457 | 881-2373 |
| 2045 | WILSON, DONALD G. | 202 | 882-8432 | 534-9702 |
| 5332 | WILSON, PATTI T. | 471 | 882-8365 | 534-9702 |
| 3359 | WILSON, RUTHY W. | 721 | 882-8319 | 883-9530 |
| 5421 | WILSON, WILLIAM H. | 214 | 882-8464 | 852-8287 |
| 5570 | WINTERS, CATHY J. | 631 | 882-8175 | Unlisted |
| 0296 | WINTON, ANDREW | 332 | 882-8121 HARTSELLE | 778-8459 |

| TC# | NAME | SEC.# | OFFICE PHONE | HOME PHONE |
|--|------------------------|-------|----------------------------|---------------|
| 5608 | WOLFORD, JEFF C. | 852 | 882-8304 GUNTERS'V'LE | 582-4544 |
| 5682 | WOODY, L. DONALD, JR. | 435 | 882-8254 | 882-2547 |
| 0691 | WORLEY, RICHARD E. | 612 | 882-8150 | 536-6889 |
| 5661 | WORSHAM, PHILLIP D. | 554 | 882-8188 HAZEL GRN | 828-3617 |
| 5782 | WRIGHT, David D. | 722 | 882-8310 | 881-1988 |
| 5875 | WRIGHT, JAMES M. | 354 | 882-8293 | 859-5737 |
| YY | | | | |
| 4882 | YANCEY, JACKIE L. | 614 | 882-8160 UNION GRV | 498-2175 |
| 5727 | YARBROUGH, DAVID R. | 554 | 882-8492 UNION GRV | 498-3071 |
| 5717 | YARBROUGH, FRED H. | 321 | 882-8525 ATHENS | 232-4410 |
| 0233 | YELL, BILLY R. | 712 | 882-8344 | 837-4823 |
| 0446 | YELL, HERBERT J. (CUB) | 435 | 882-8247 | 883-8632 |
| ZZ | | | | |
| 2172 | ZEMAN, SAM | 432 | 882-8234 ³⁷⁴ | 881-6099 |
| 5047 | ZIMMERMAN, RAYMOND C. | 432 | 882-8256 | 883-7218 |